

# The Banksia

2.5  1  1 



## Features

- ▶ 6 Star Energy Rating
- ▶ Gable roof design with raked ceilings to living areas
- ▶ Quality vinyl to kitchen & wet areas
- ▶ and carpet to living & bedroom

## Dimensions

- ▶ Length: 11.0m
- ▶ Width: 6.0m
- ▶ Total Area (m<sup>2</sup>): 66.0m<sup>2</sup>
- ▶ Total Area (Sq): 7.1sq

Photographs and illustrations are intended to be a visual aid only. Fixtures, finishes & features may not be a standard



THE RIGHT HOME. THE RIGHT TIME.

**Displays open Monday to Saturday, 10am - 4pm**

816 Mountain Hwy, Bayswater, VIC, 3153

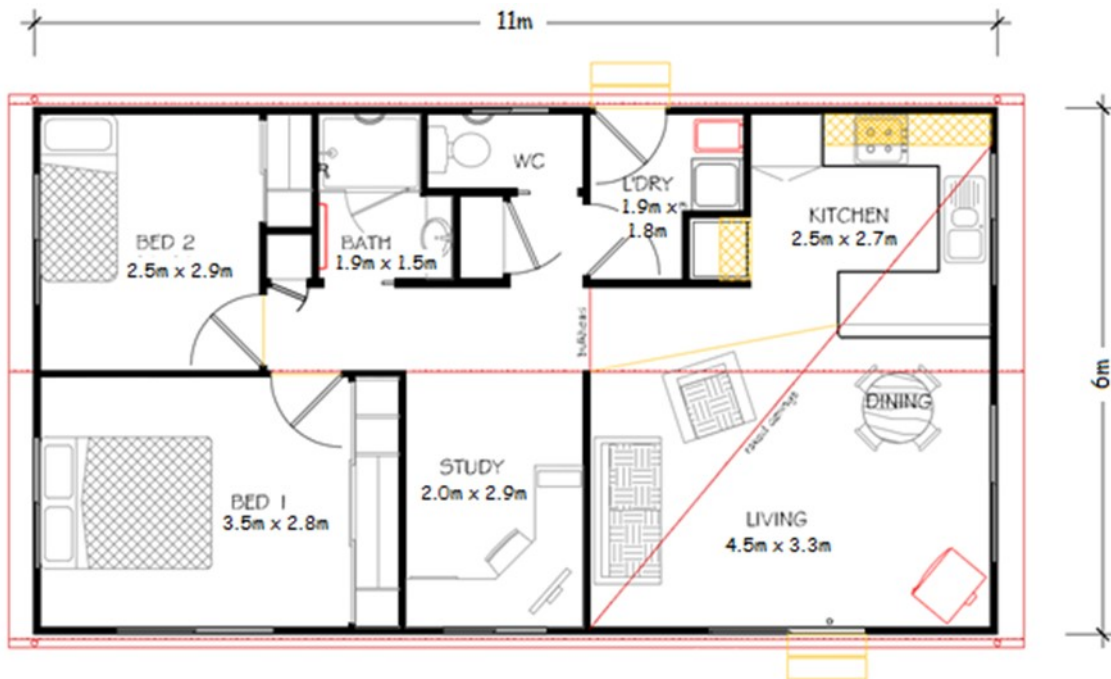
Ph: **(03) 9720 1686** | Fax: **(03) 9720 1690**

E: **enquiries@toddevine.com.au**

[www.toddevine.com.au](http://www.toddevine.com.au)

# The Banksia

2.5  1  1 



## Specifications

- ✓ 66 square meters floor space
- ✓ Gable roof with raked ceiling to living areas (Gable eaves)
- ✓ External cladding as James Hardie Primeline Chamfer Boards
- ✓ Colorbond roof with powder coated aluminium windows with insect screens
- ✓ Sliding glass entry door with insect screen and ½ glass to laundry
- ✓ Quality plasterboard walls with 55mm covered cornice
- ✓ Fully painted interior & exterior with gloss enamel to internal trim
- ✓ Full laminate kitchen with rolled formed bench tops, built in pantry & fridge provision
- ✓ Electric under bench oven and electric cooktop with slide out range hood
- ✓ 1 bowl stainless steel sink with mixer tap set and left-hand draining area
- ✓ Bathroom – 1200 x 900 shower with preformed base, tiled walls & glass pivot door, 300mm wide semi recessed bowl vanity with mirror above, towel rail, fan/light heater & privacy latch to door
- ✓ Laundry – 35ltr slim line tub, standard washing machine provision
- ✓ Separate dual flush toilet with toilet roll holder & privacy latch provided
- ✓ All plumbing fixtures and fittings included
- ✓ Generous power and light points throughout
- ✓ Floor coverings, carpet to bedrooms, study and living areas and vinyl planking to remainder of the unit
- ✓ Vinyl sliding door built in robe to bed 1 (3 x set of 4 shelves with hanging rail provided)



THE RIGHT HOME. THE RIGHT TIME.

**Displays open Monday to Saturday, 10am - 4pm**

816 Mountain Hwy, Bayswater, VIC, 3153

Ph: **(03) 9720 1686** | Fax: **(03) 9720 1690**

E: **enquiries@toddevine.com.au**

[www.toddevine.com.au](http://www.toddevine.com.au)