

The Serenity

2.5  1  2 



Features

- ▶ 6 Star Energy Rating
- ▶ Gable roof design with level ceilings throughout
- ▶ Quality vinyl to kitchen & wet areas and carpet to living & bedroom
- ▶ Large range of finishings & options

Dimensions

- ▶ Length: 12.1m
- ▶ Width: 7.2m
- ▶ Total Area (m²): 87.9m²
- ▶ Total Area (Sq): 9.4sq
(Including verandah)

Photographs and illustrations are intended to be a visual aid only. Fixtures, finishes & features may not be a standard inclusion. Verandahs, porches and/or decks may or may not be included; check floor plan. Landscaping not provided.



THE RIGHT HOME. THE RIGHT TIME.

Displays open Monday to Saturday, 10am - 4pm

816 Mountain Hwy, Bayswater, VIC, 3153

Ph: (03) 9720 1686 | Fax: (03) 9720 1690

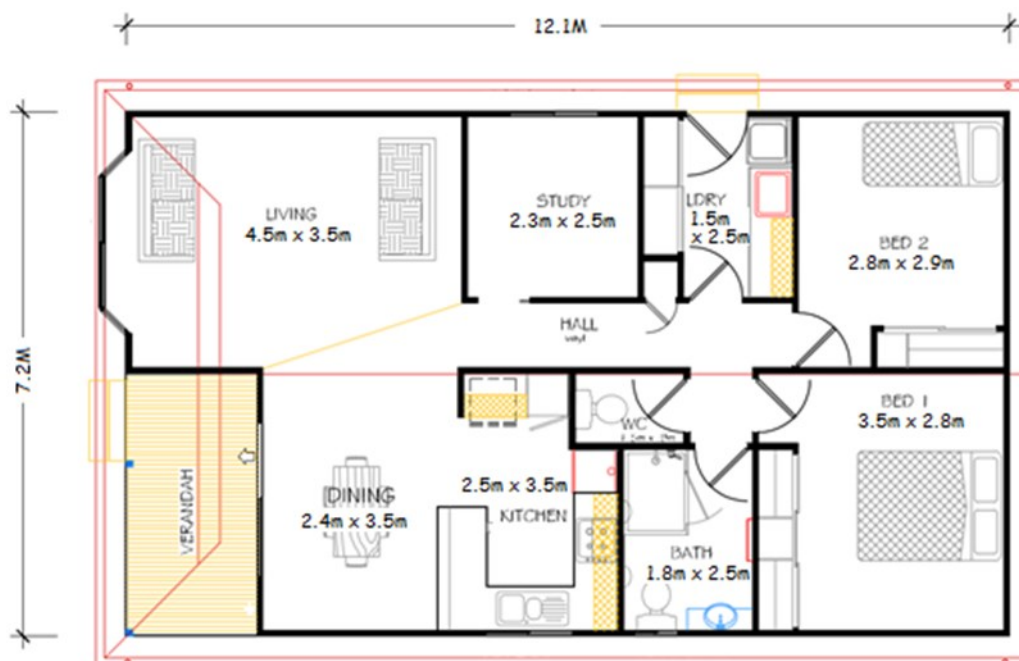
E: enquiries@toddddevine.com.au

ABN: 21 104 128 583

www.toddddevine.com.au

The Serenity

2.5  1  2 



Specifications

- ✓ 87.9 square meters floor space (incl. verandah)
- ✓ Gable roof with level ceilings throughout (eaves)
- ✓ External cladding as James Hardie Primeline Chamfer Boards
- ✓ Colorbond roof with powder coated aluminium windows with insect screens
- ✓ Sliding glass entry door off verandah and ½ glass to laundry
- ✓ Quality plasterboard walls with 55mm covered cornice
- ✓ Fully painted interior & exterior with gloss enamel to internal trim
- ✓ Full laminate kitchen with rolled formed bench tops, built in pantry & fridge provision
- ✓ Electric wall oven and electric cooktop with slide out range hood
- ✓ 1 bowl stainless steel sink with mixer tap set and left-hand draining area
- ✓ Bathroom – 1200 x 900 shower with preformed base, tiled walls & glass pivot door, 300mm wide semi recessed bowl vanity with mirror above, towel rail, dual flush toilet with toilet roll holder, fan/light heater provided and privacy lock to door
- ✓ Laundry – Inset tub, standard washing machine provision, laminate bench with overhead cupboards and built in vinyl sliding broom / linen cupboard (8 x shelves)
- ✓ Separate dual flush toilet with toilet roll holder & privacy lock to door
- ✓ All plumbing fixtures and fittings included
- ✓ Generous power and light points throughout
- ✓ Floor coverings, carpet to bedrooms, and living areas and vinyl planking to remainder of the unit
- ✓ Vinyl sliding door built in robe to bed 1 & 2 (1 x set of 4 shelves with hanging rails provided)
- ✓ Built in swinging door broom cupboard to hallway
- ✓ 160ltr electric HWS
- ✓ 6 star energy rated comfort



THE RIGHT HOME. THE RIGHT TIME.

Displays open Monday to Saturday, 10am – 4pm

816 Mountain Hwy, Bayswater, VIC, 3153

Ph: (03) 9720 1686 | Fax: (03) 9720 1690

E: enquiries@todddevine.com.au

ABN: 21 104 128 583

www.todddevine.com.au