

The Eucalypt

2  1  1 



Features

- ▶ 6 Star Energy Rating
- ▶ Gable roof design with raked ceilings to living areas
- ▶ Quality vinyl to kitchen & wet areas and carpet to living & bedroom
- ▶ Large range of finishings & options

Dimensions

- ▶ Length: 10.6m
- ▶ Width: 6.6m
- ▶ Total Area (m²): 69.9m²
- ▶ Total Area (Sq): 7.5sq

Photographs and illustrations are intended to be a visual aid only. Fixtures, finishes & features may not be a standard inclusion. Verandahs, porches and/or decks may or may not be included; check floor plan. Landscaping not provided.



THE RIGHT HOME. THE RIGHT TIME.

Displays open Monday to Saturday, 10am - 4pm

816 Mountain Hwy, Bayswater, VIC, 3153

Ph: (03) 9720 1686 | Fax: (03) 9720 1690

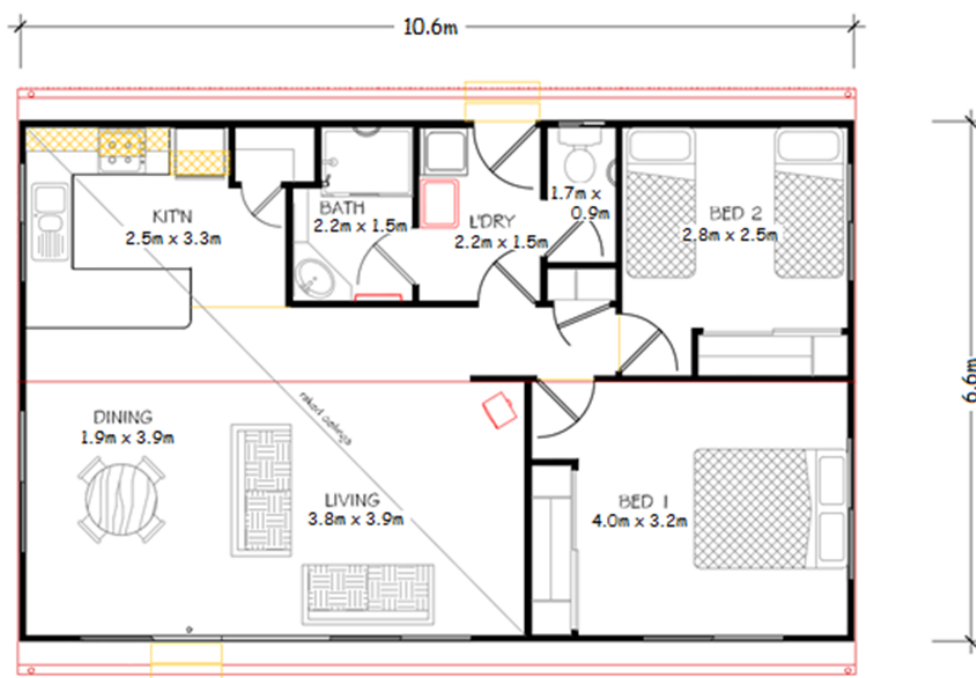
E: enquiries@toddddevine.com.au

ABN: 21 104 128 583

www.toddddevine.com.au

The Eucalypt

2  1  1 



Specifications

- ✓ 69.9 square meters floor space
- ✓ Gable roof with raked ceiling to living areas (eaves to front & rear)
- ✓ External cladding as James Hardie Primeline Chamfer Boards
- ✓ Colorbond roof with powder coated aluminium windows with insect screens
- ✓ Sliding Glass entry door with insect screen and ½ glass to laundry
- ✓ Quality plasterboard walls with 55mm covered cornice
- ✓ Fully painted interior & exterior with gloss enamel to internal trim
- ✓ Full laminate kitchen with rolled formed bench tops, built in corner pantry & fridge provision
- ✓ Electric under bench oven and electric cooktop with slide out range hood
- ✓ 1 bowl stainless steel sink with mixer tap set and left-hand draining area
- ✓ Bathroom – 1200 x 900 shower with preformed base, tiled walls and glass pivot door, corner vanity with mirror above, towel rail, fan/light heater and privacy lock to door
- ✓ Laundry – 45ltr tub with standard washing machine provision
- ✓ Separate dual flush toilet with toilet roll holder & privacy latch to door
- ✓ All plumbing fixtures and fittings included
- ✓ Generous power and light points throughout
- ✓ Floor coverings, carpet to bedrooms and living areas and vinyl planking to remainder of the unit
- ✓ Vinyl sliding door built in robe to bed 1 (2 x set of 4 shelves with hanging rail provided)
- ✓ Vinyl sliding door built in robe to bed 2 (1 x set of 4 shelves with hanging rail provided)
- ✓ Built in laminate swinging door linen / broom cupboard to hallway (5 x shelves)
- ✓ 160ltr electric HWS
- ✓ 6 star energy rated comfort



THE RIGHT HOME. THE RIGHT TIME.

Displays open Monday to Saturday, 10am – 4pm

816 Mountain Hwy, Bayswater, VIC, 3153

Ph: (03) 9720 1686 | Fax: (03) 9720 1690

E: enquiries@toddddevine.com.au

ABN: 21 104 128 583

www.toddddevine.com.au