

# The Redgum

1  1  1 



## Features

- ▶ 6 Star Energy Rating
- ▶ Gable roof design with raked ceilings to living areas
- ▶ Quality vinyl to kitchen & wet areas and carpet to living & bedroom
- ▶ Large range of finishings & options

## Dimensions

- ▶ Length: 8.1m
- ▶ Width: 6.0m
- ▶ Total Area (m<sup>2</sup>): 44.1m<sup>2</sup>
- ▶ Total Area (Sq): 4.7sq  
(Including verandah)

Photographs and illustrations are intended to be a visual aid only. Fixtures, finishes & features may not be a standard inclusion. Verandahs, porches and/or decks may or may not be included; check floor plan. Landscaping not provided.



THE RIGHT HOME. THE RIGHT TIME.

Displays open Monday to Saturday, 10am - 4pm

816 Mountain Hwy, Bayswater, VIC, 3153

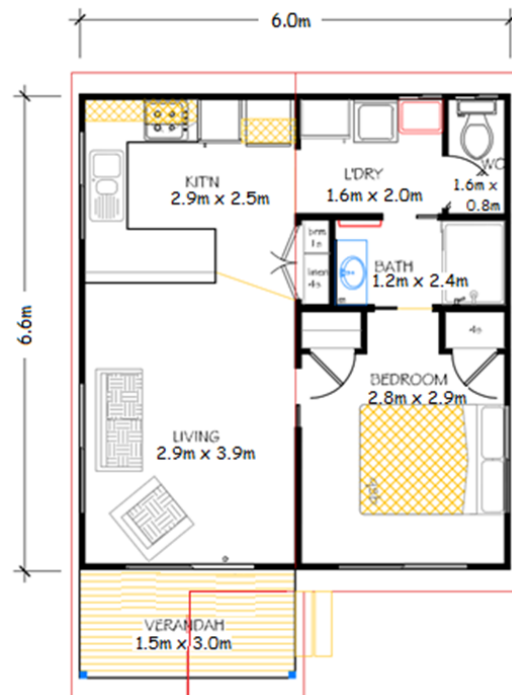
Ph: (03) 9720 1686 | Fax: (03) 9720 1690

E: [enquiries@todddevine.com.au](mailto:enquiries@todddevine.com.au)

ABN: 21 104 128 583

[www.todddevine.com.au](http://www.todddevine.com.au)

# The Redgum



## Specifications

- ✓ 44 square meters floor space (incl. verandah)
- ✓ Gable roof with raked ceiling to living areas (eaves to front and rear)
- ✓ External cladding as James Hardie Primeline Chamfer Boards
- ✓ Colorbond roof with powder coated aluminium windows with insect screens
- ✓ Verandah with sliding glass entry door and insect screen
- ✓ Quality plasterboard walls with 55mm coved cornice
- ✓ Fully painted interior & exterior with gloss enamel to internal trim
- ✓ Full laminate kitchen with rolled formed bench tops, built in pantry & fridge provision
- ✓ Electric under bench oven and electric cooktop with slide out range hood
- ✓ 1 bowl stainless steel sink with mixer tap set and left-hand draining area
- ✓ Bathroom – 1200 x 900 shower with preformed base, tiled walls and glass pivot door, 500mm wide recessed bowl vanity with mirror above, towel rail, fan/light heater provided & privacy lock to door
- ✓ Laundry – 45ltr tub, standard washing machine provision and laminate cupboard (4 shelves)
- ✓ Separate dual flush toilet with toilet roll holder & privacy lock provided
- ✓ Built in swinging door broom and linen cupboards
- ✓ All plumbing fixtures and fittings included
- ✓ 2 x swinging door built in robes to bed (1 x set of 4 shelves and 1 x hanging rail provided)
- ✓ Floor coverings, carpet to bedrooms and living area and vinyl planking to remainder of the unit
- ✓ 160 litre electric hot water system
- ✓ Generous power and light points throughout
- ✓ 6 star energy rated comfort



THE RIGHT HOME. THE RIGHT TIME.

Displays open Monday to Saturday, 10am – 4pm

816 Mountain Hwy, Bayswater, VIC, 3153

Ph: (03) 9720 1686 | Fax: (03) 9720 1690

E: [enquiries@todddevine.com.au](mailto:enquiries@todddevine.com.au)

ABN: 21 104 128 583

[www.todddevine.com.au](http://www.todddevine.com.au)