

The Buchan

3  1  1 



Features

- ▶ 6 Star Energy Rating
- ▶ Gable roof design with raked ceilings to living areas
- ▶ Quality kitchen with built in pantry and stainless steel appliances
- ▶ Large range of finishings & options

Dimensions

- ▶ Length: 13.2m
- ▶ Width: 7.2m
- ▶ Total Area (m²): 95.04m²
- ▶ Total Area (Sq): 10.25sq
(Excluding optional verandah)

Photographs and illustrations are intended to be a visual aid only. Fixtures, finishes & features may not be a standard inclusion. Verandahs, porches and/or decks may or may not be included; check floor plan. Landscaping not provided.



THE RIGHT HOME. THE RIGHT TIME.

Displays open Monday to Saturday, 10am - 4pm

816 Mountain Hwy, Bayswater, VIC, 3153

Ph: (03) 9720 1686 | Fax: (03) 9720 1690

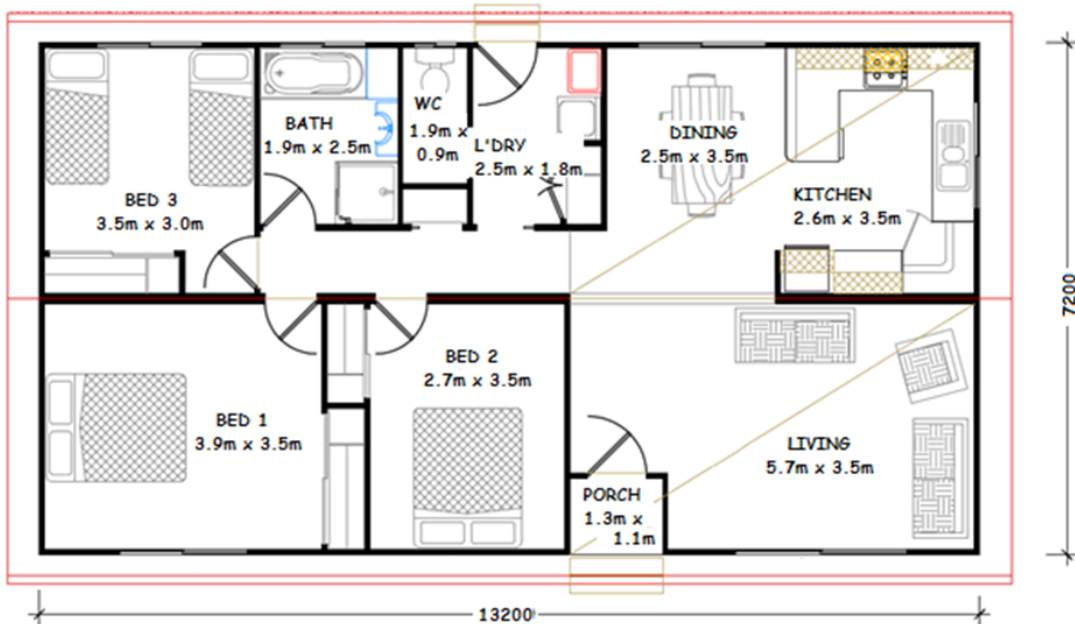
E: enquiries@todddevine.com.au

ABN: 21 104 128 583

www.todddevine.com.au

The Buchan

3  1  1 



Specifications

- ✓ 95 square meters floor space (incl. porch)
- ✓ Gable roof with raked ceiling to living areas (eaves to all sides)
- ✓ External cladding as James Hardie Primeline Chamfer Boards
- ✓ Colorbond roof with powder coated aluminium windows with insect screens
- ✓ Solid feature entry door off small porch with ½ glass to laundry
- ✓ Quality plasterboard walls with 55mm covered cornice
- ✓ Fully painted interior & exterior with gloss enamel to internal trim
- ✓ Full laminate kitchen with rolled formed bench tops, built in corner pantry & fridge provision
- ✓ Electric under bench oven and electric cooktop with slide out range hood
- ✓ 1 1/3 bowl stainless steel sink with mixer tap set and left-hand draining area
- ✓ Bathroom – 900 x 900 shower with preformed base, tiled walls & glass pivot door, bathtub, 300 wide semi recessed bowl vanity with mirror above, towel rail, fan/light heater and privacy lock to door
- ✓ Laundry – 45ltr tub, standard washing machine provision & built in swinging door cupboard(5 shelves)
- ✓ Separate dual flush toilet with toilet roll holder & privacy latch to door
- ✓ All plumbing fixtures and fittings included
- ✓ Vinyl sliding door built in robes to all bedrooms (1 x set of 4 shelves and hanging rail provided)
- ✓ Built in cupboard with cavity sliding door to hallway (4 shelves)
- ✓ No floor coverings provided
- ✓ 250 litre electric hot water system supplied loose
- ✓ Generous power and light points throughout
- ✓ 3000ltr slimline w/tank with pump to service sanitary flushings, supplied loose
- ✓ 6 star energy rated comfort



THE RIGHT HOME. THE RIGHT TIME.

Displays open Monday to Saturday, 10am – 4pm

816 Mountain Hwy, Bayswater, VIC, 3153

Ph: (03) 9720 1686 | Fax: (03) 9720 1690

E: enquiries@toddddevine.com.au

ABN: 21 104 128 583

www.toddddevine.com.au